



Uncertain impact: Have the Roma in Slovakia benefitted from the ESF?

Findings from an analysis of ESF Employment and Social Inclusion Projects in the 2007-2013 Programming Period

Background

- Part of the pilot project funded by the European Commission's Directorate-General for Regional and Urban Policy on new approaches to monitoring and evaluation
- and the project on the statistical monitoring of living conditions of Roma in Slovakia, funded by the Ministry of Labour, Social affairs and Family in Slovakia.
- Seeking to identify outcomes of Roma targeted policies/programs



Key research questions

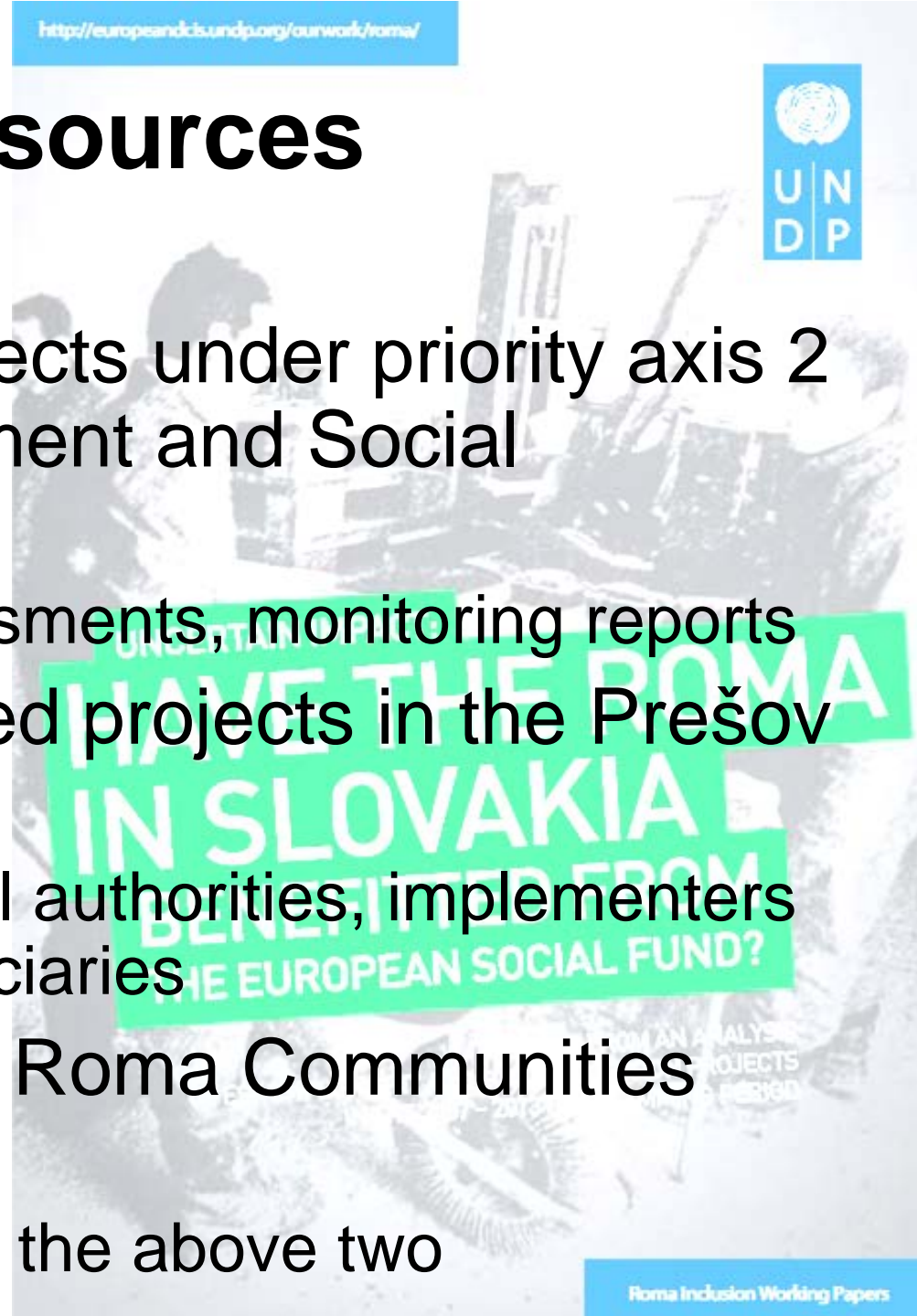
- How the structural funds (ESF) ‘perform’ in reality in regards Roma in the case of Slovakia?
- Does the managerial system and the existing procedures allow following the M&E chain?
- If not, what is missing?
- What can be improved for the next programming period?

UNCERTAIN IMPACT:
HAVE THEY ROMA
IN SLOVAKIA
BENEFITTED FROM
THE EUROPEAN SOCIAL FUND?

FROM AN ANALYSIS
ON PROJECTS
MAY 2008 PERIOD

Data sources

- Sample of 298 projects under priority axis 2 of the OP 'Employment and Social Inclusion'
 - applications; assessments, monitoring reports
- Site visits to selected projects in the Prešov Region
 - interviews with local authorities, implementers and ultimate beneficiaries
- Data set of Atlas of Roma Communities (2004)
 - used for analysis of the above two



Key findings

- Adequately defining the target of the interventions is problematic
- The measures do not reach those most in need
- The chances to benefit from ESF support also positively correlate with the size of the municipality
- Only 1/5 of projects located in the most segregated and underdeveloped localities
- The current setting does not allow robust outcome evaluation of ESF projects
- Cost-benefit analysis is impossible (only costs/inputs and accounted for)

Recommendations

- **Entire process of SF administration for the grant beneficiaries be designed such that administrative burden is minimized** (substance above administration)
- **Use the possibility to reimburse indirect costs on the basis of a flat rate, making it possible to pay for operations based on outputs and results rather than financial input** (monitoring of results above spending)
- **Introduce ways of smart reporting and monitoring that generate meaningful data for further M&E** (clear justification)

UNCERTAIN IMPACT

HAVE THE ROMA

INSTANTANEA

BENEFITTED FROM
THE EUROPEAN SOCIAL FUND?

FROM AN ANALYSIS
ON PROJECTS
IN THE REGION

Recommendations

- **Outputs of project activities must be better tracked** (forms)
- **Actively involve the Roma communities in project implementation and the monitoring and evaluation cycle** (beneficiaries in M&E)
- **Blend mainstreamed and targeted approaches**
- **Mainstream policies so that Roma benefit as well** (continuous program over project-based, e.g. health mediators)



Recommendations

- **Mainstream the concern for Roma through conditionality for the usage of EU structural funds in all funding lines**
- **Complex municipal projects should be supported** (multi-sectoral over multi-locality)





UN
DP

Team of authors

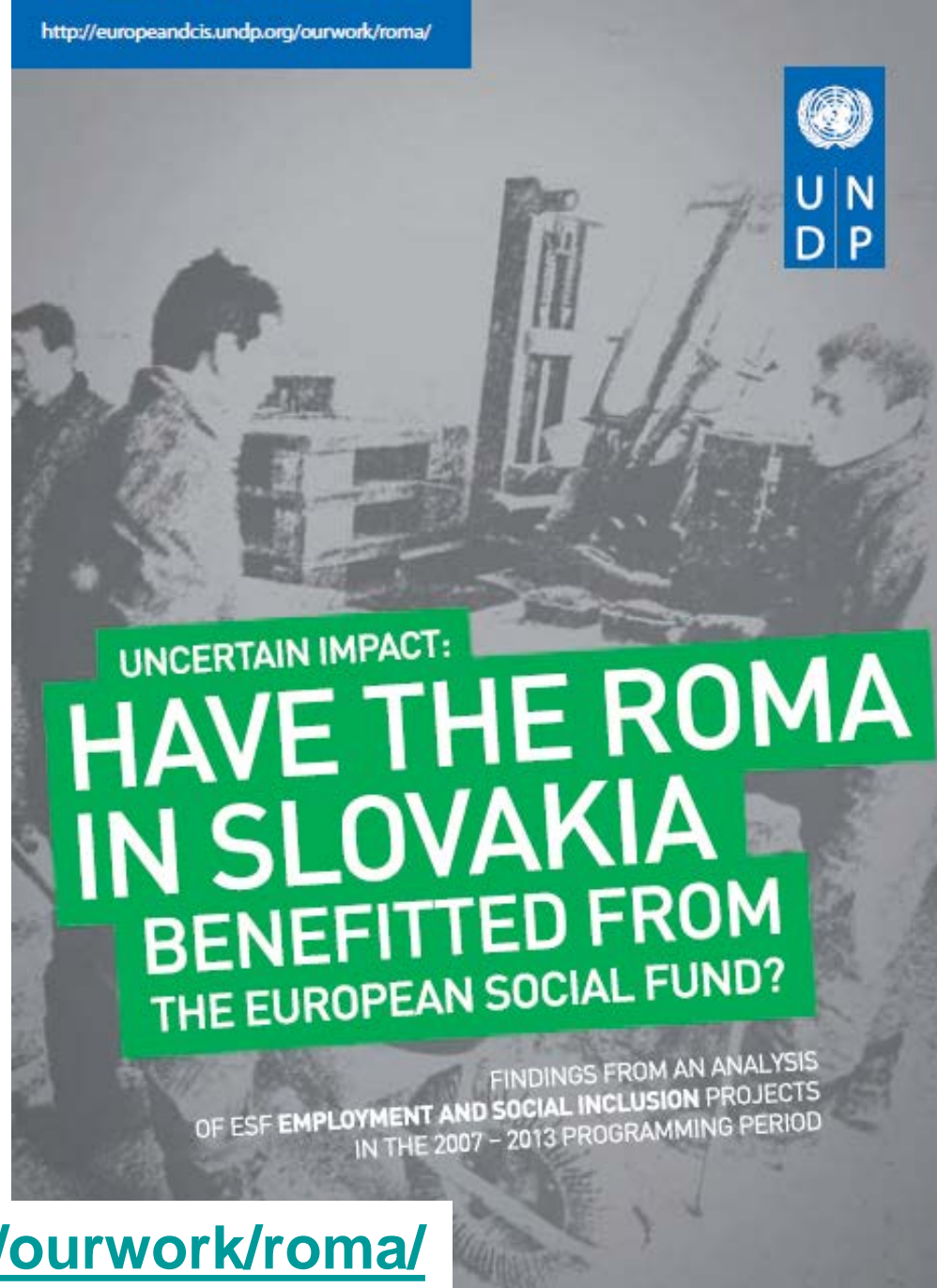
Jakob Hurrle, Charles University
Prague, Faculty of Sciences,
Department of Geography

Andrey Ivanov, UNDP Regional
Support Centre, Bratislava

Jan Grill, University of St. Andrews,
Department of Anthropology

Jaroslav Kling, UNDP Regional
Support Centre, Bratislava

Daniel Škobla, UNDP Regional
Support Centre, Bratislava



UNCERTAIN IMPACT:

HAVE THE ROMA
IN SLOVAKIA

BENEFITTED FROM
THE EUROPEAN SOCIAL FUND?

FINDINGS FROM AN ANALYSIS
OF ESF EMPLOYMENT AND SOCIAL INCLUSION PROJECTS
IN THE 2007 - 2013 PROGRAMMING PERIOD

<http://europeandcis.undp.org/ourwork/roma/>